

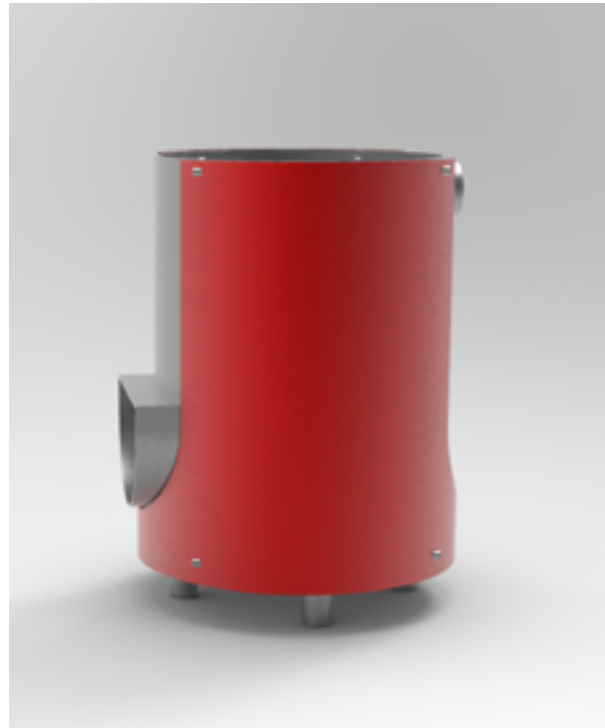
Bottom of the Pyramid Stove and Shoes

The brief was to create a shoe and a shoe box-sized product which could contain the shoes for shipping.



The shoe

The container



To help the Bottom of the Pyramid

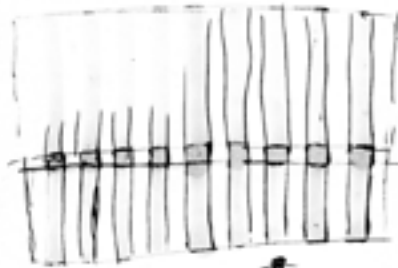
Problem: Smoke related diseases

User: 90% of the BOP are biomass burners

Need: A stove that burns fuel better and removes the gases produced out of the living area.

Context: People who are using biomass may not have the money to spend on a different fuel source, so it's better to burn the fuel cleaner and use a chimney.

Research



- Is the stove stationary or portable?



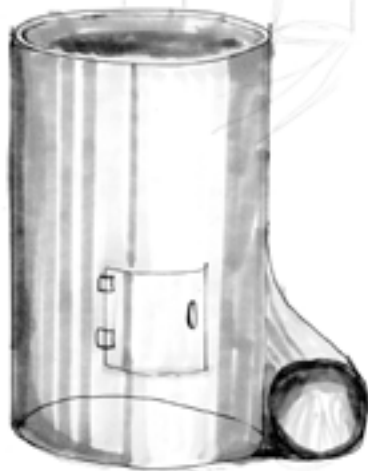
How might you incorporate the distance factor into your product?



Side

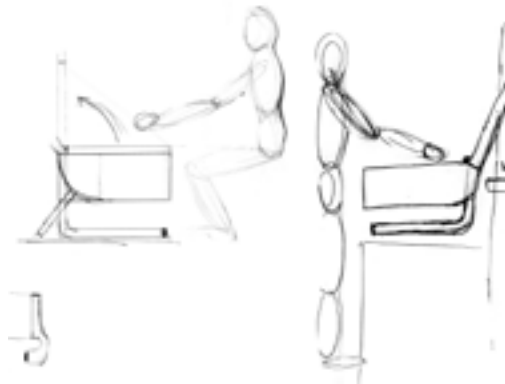


How might you fit a stove into a shoe box?

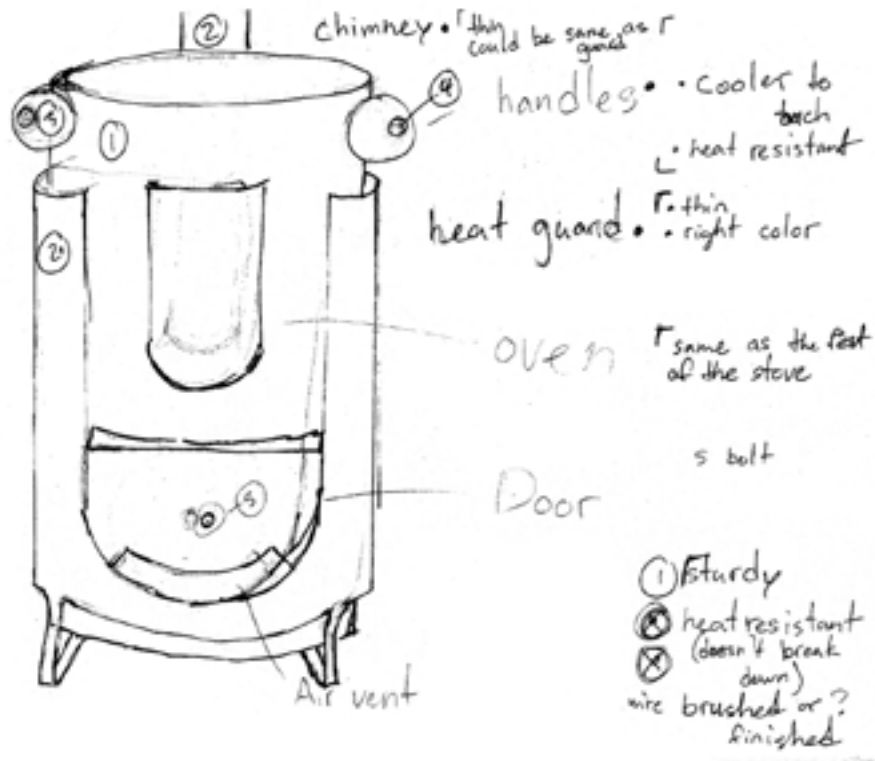


Shoe Box sized

Think large Soda Can Shape



Sketching



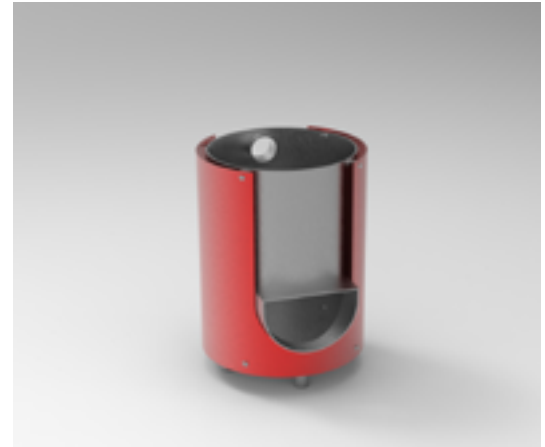
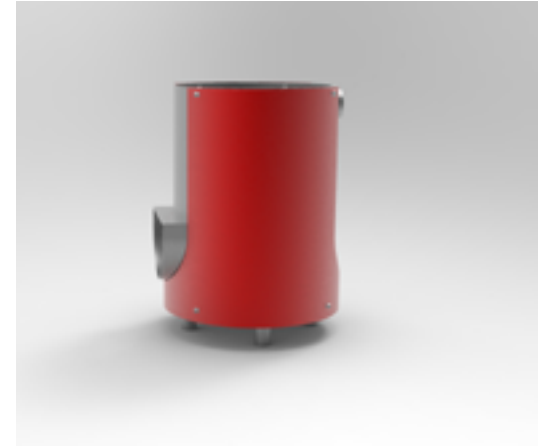
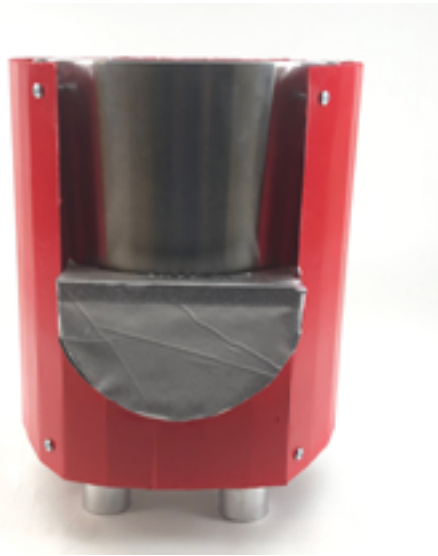
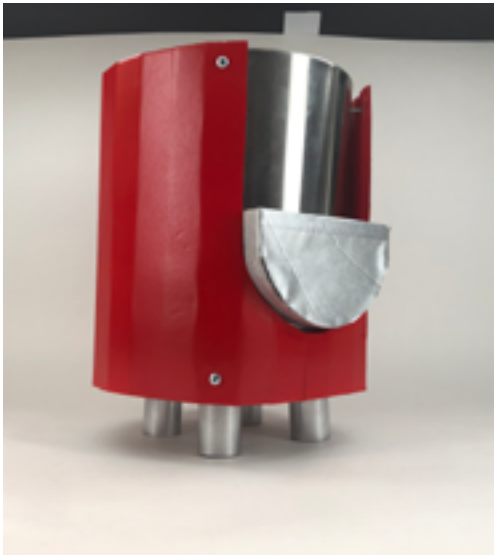
KÜHL



Finalizing Design

Sketching Shoe Concepts

This project is a concept and was not done with the company Kühl.

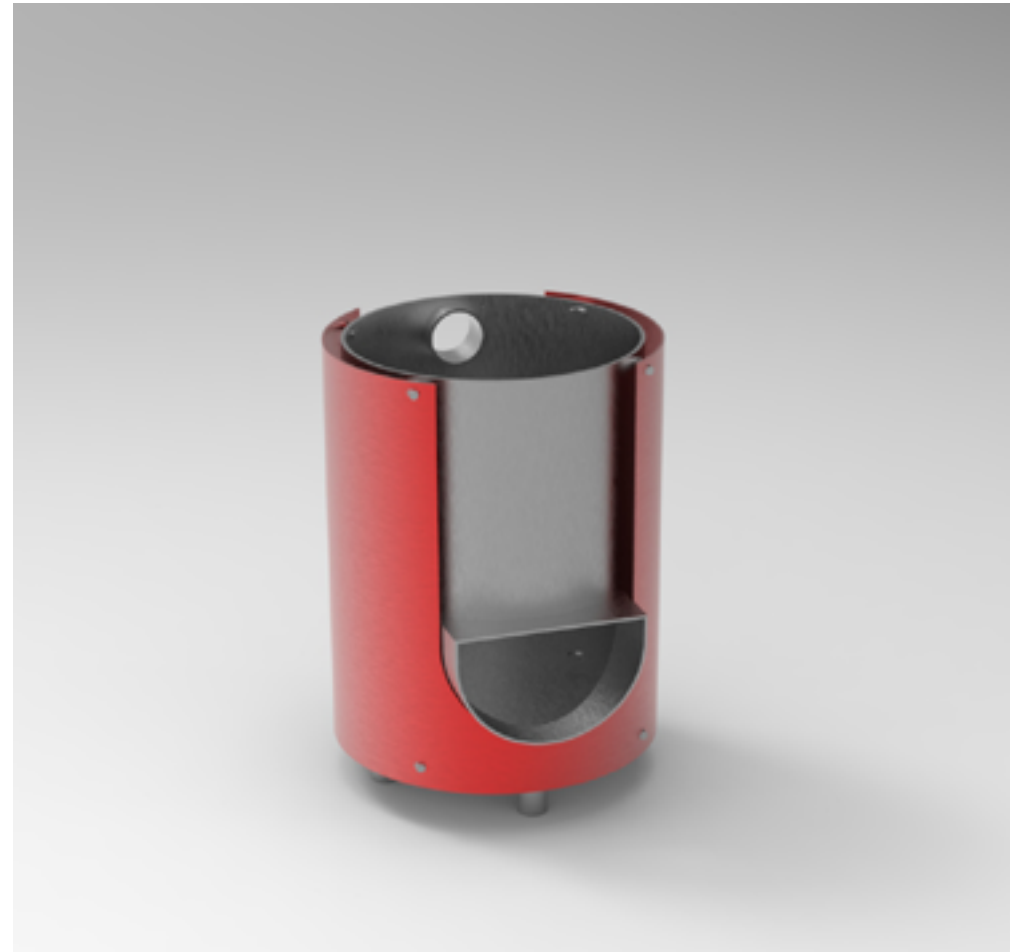


Mid-fidelity Prototype

CAD Rendering



Final Drawing



Final CAD Rendering